

中华人民共和国出入境检验检疫行业标准

SN/T 1981—2007

Annex A
(informative)
GC-MS total ion chromatogram of the cyflufenamid standard

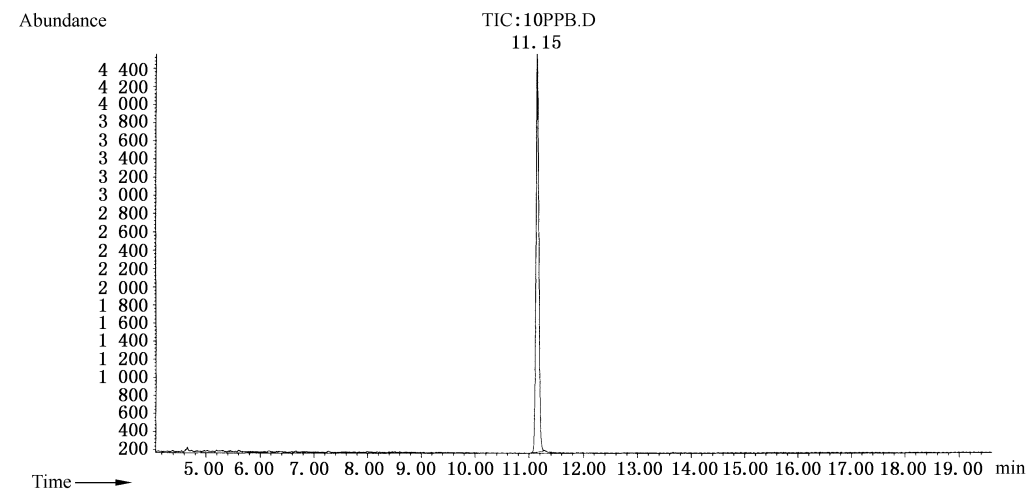


Figure A. 1—GC-MS total ion chromatogram of the cyflufenamid standard

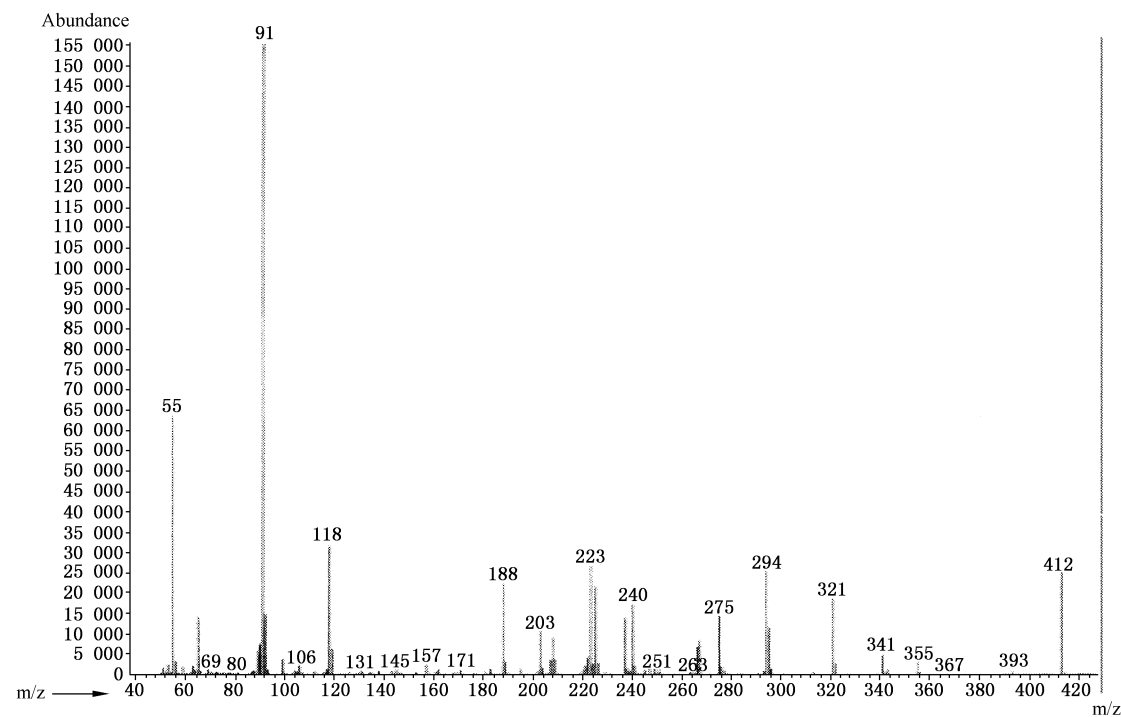


Figure A. 2—Mass spectrum of the cyflufenamid standard



SN/T 1981—2007

书号: 155066 · 2-18266

定价: 12.00 元

2007-08-06 发布

2008-03-01 实施

中华人民共和国
国家质量监督检验检疫总局 发布

进出口食品中环氟菌胺残留量的 检测方法 气相色谱-质谱法

Determination of cyflufenamid residues in food for import and export—
GC-MS method

Table 2(continued)

Sample	Added concentrations/(μ g/kg)	Recovery range/%
carrot	5.0	90.80~107.80
	10	90.33~95.90
	20	94.06~108.44
scallion	5.0	90.10~95.40
	10	83.20~99.90
	20	91.94~99.55
apple	5.0	92.30~101.30
	10	91.43~116.93
	20	92.08~108.51
pine apple	5.0	97.00~104.50
	10	94.53~103.23
	20	90.01~109.50
maize	5.0	80.90~92.70
	10	86.65~101.30
	20	79.80~95.78
wheat	5.0	81.20~111.40
	10	85.25~92.05
	20	83.48~96.53
peanut	5.0	75.00~100.70
	10	90.80~109.00
	20	86.13~118.15
tea	10	83.30~107.00
	20	77.60~104.80
	40	81.50~102.00
honeysuckle	10	81.60~98.50
	20	80.40~93.12
	40	84.46~94.42
Perilla frutescens	10	84.35~101.70
	20	82.85~103.45
	40	84.14~98.88

中华人民共和国出入境检验检疫
行业标准
进出口食品中环氟菌胺残留量的
检测方法 气相色谱-质谱法
SN/T 1981—2007

*

中国标准出版社出版
北京复兴门外三里河北街16号
邮政编码:100045

网址 www.spc.net.cn

电话:68523946 68517548

中国标准出版社秦皇岛印刷厂印刷

*

开本 880×1230 1/16 印张 1.25 字数 33 千字

2007年11月第一版 2007年11月第一次印刷

印数 1—2 000

*

书号: 155066·2-18266 定价 12.00 元

where

X —the residue content of cyflufenamid in the test sample, mg/kg;

A —the peak height of cyflufenamid in the sample solution;

A_s —the peak height of cyflufenamid in the standard working solution;

c —the concentration of cyflufenamid in the standard working solution, $\mu\text{g/mL}$;

V —the final volume of the sample solution, mL;

m —the corresponding mass of the test sample representing the final sample solution, g.

8 Limit of determination and recovery

8.1 Limit of determination

The limit of determination of this method: wheat, maize, peanut, pineapple, apple, scallion, carrot is 0.005 mg/kg.

Perilla frutescens, honeysuckle, the power of ginger, the power of bunge prickly ash and tea is 0.010 mg/kg.

8.2 Recovery

The experimental data of the concentrations of cyflufenamid in the fortified sample and its corresponding recoveries are seen in table 2.

Table 2—The experimental data of the concentrations of cyflufenamid in the fortified sample and its corresponding recoveries

Sample	Added concentrations/ $(\mu\text{g/kg})$	Recovery range/%
the power of bunge prickly ash	10	84.75~106.45
	20	82.10~107.78
	40	89.06~101.72
the power of ginger	10	84.65~100.90
	20	82.08~110.55
	40	83.10~103.51

前 言

本标准的附录 A 为资料性附录。

本标准由国家认证认可监督管理委员会提出并归口。

本标准起草单位:中华人民共和国山东出入境检验检疫局、中华人民共和国浙江出入境检验检疫局。

本标准主要起草人:李立、李征、尹大路、丁慧瑛、曹鹏、李秀勇、隋涛。

本标准系首次发布的出入境检验检疫行业标准。